



COALFIELDS  
COMMUNITY  
FUTURES

# RIGSIDE & DOUGLAS WATER COMMUNITY ACTION PLAN 2018-2023



# Contents:

Introduction	3
Our Community Now	4-6
Our shared vision for our community	7
Our Likes	8
Our Dislikes	9
<b>Themes and Priorities for Action:</b>	
<b>Theme 1:</b> Amenities	10
<b>Theme 2:</b> Community Activities and Facilities	11
<b>Theme 3:</b> Roads and Transport	12
<b>Theme 4:</b> Village Environment	13
Early Actions funded through the Participatory Budget	14
Making the links to Community Planning	14
What the kids have to say!	15
Making it happen	16





## Introduction

**52** Community Household Surveys were returned representing the views of approximately 120 residents

**160** people attended the Community Futures Family Fun Day on 16th September 2017 at the Rigside Community Hall.

## Coalfields Community Futures

The Coalfields Community Futures Programme is an approach to local community planning and sustainable community development that aims to encourage active citizenship and build local democracy. It enables communities to devise a community action plan which makes a case for the things that the community thinks are important and wishes to make happen.

The process builds on existing processes of community action research to identify local needs and priorities, using residents as co-researchers. We work with local residents and groups to develop a common sense of purpose and assist them to produce a deliverable community action plan.

To support the action planning process the community receive a Participatory Budget which is available to local constituted community or voluntary groups.

This budget enables the community to fund small projects that are identified by the community through the results of the household surveys, stakeholder interviews and the Family Fun Day.

## Rigside & Douglas Water Community Action Plan

The Action Plan summarises community views and information about:

- Our community now
- Our shared Vision for Rigside & Douglas Water
- Priority Themes and Actions

The Steering Group brought together representatives from Rigside Tenants and Residents Association and local residents.

**Thank you to everyone who took part in helping Rigside & Douglas Water plan for a bright future!**



# Our Community Now

## Background

This Profile has been produced to give an insight into the Rigside & Douglas Water area. It is part of a wider Community Futures process being delivered by the Coalfields Regeneration Trust across Scotland's coalfield communities to assist them to reflect on what is good, what could be improved and how to go forward.

## Location and history:

Nestling in a green landscape Rigside and Douglas Water are small rural ex mining villages in South Lanarkshire, Scotland, about 5 miles from the town of Lanark. They are just off the A70 road to Ayr.

Today, Rigside village has one shop, a takeaway, cafe and public house. It also has regular visits from a Fish Van and Mobile Library. It used to have a mobile bank but now the nearest banking facility is in Lanark.



## Population

Total population 830

Breakdown 0-15 age group -145, working age - 515, aged over 65 - 170

Source Mid-Year Estimates (ONS) 2015

## Housing

Rigside & Douglas Water has just under 37% owner occupied houses which is significantly lower than Scotland as a whole at 62%, and just over 50% of people are living in Local Authority rented households which is significantly higher than Scotland as a whole at 13%

Source: Census 2011

The houses in the village are heated in order by ASHP, coal, oil, and LPG. There is no mains gas in the village



## Health

Rigside & Douglas Water has its own health centre and district nurses.

Lady Home Hospital is a community hospital sited in Douglas. It cares for acute medical patients and also provides rehabilitation and terminal care. The hospital also has consultant out-patient clinics and a minor accident emergency service. The nearest General Hospital is Wishaw General.

People with a limiting long-term illness as at the 2011 Census was just under 27% which is markedly higher than Scotland as a whole at 19.6%

# Our Community Now

## Employment and the Economy

Almost 61% of residents are economically active which is lower than Scotland as a whole at 69%. The figure of 39% of residents who are economically inactive is markedly higher than Scotland as a whole at 31%

The 3 largest employment sectors are Health and Social Work (16%) followed by Construction (12%) and then Retail (11%) Source: Census 2011

The two most significant businesses locally are Paterson's Haulage and JHB Transport. Between them they employ around 100 people.

## Education

Rigside Primary School is on Muirfoot Road and includes Rigside and Rural Communities Nursery with a school roll of 58.

Stakeholder interviews reveal that the Nursery and Primary School are 'first class'.

The 2011 Census shows that just under 44% of residents aged between 16 - 74 have no qualifications which is significantly higher than Scotland as a whole at just under 27%



## Social and Community

Rigside Community Hall adjoins the local primary school. Rigside Primary School use the hall for daily lunches, physical education and drama.

The premises comprise a main hall, annexe hall, meeting room and kitchen.

The main hall can accommodate up to 200 people seated in concert style and 140 for a catered function.

The annexe hall can accommodate up to 70 people and 45 if seated function.

The committee room can accommodate up to 50 people.

The kitchen is suitable to cater for small functions and can be used to provide teas and coffees. There is a car park to the side of the hall.

This facility is used for a variety of community, social and commercial activities. With no church building available the Sunday Church Service also takes place in the Community Hall as well as Indoor Bowling.

Other facilities in the area includes the Douglas Water Golf Club.





# Our Community Now

## Environment



Rigside & Douglas Water is home to the Rigside and Douglas Water Community Nature Reserve. Recently the group that promoted its development and use has been revived and there are plans to develop the paths and enhance the biodiversity through community planting activities.

## Roads and Transport



From Stakeholder interviews the problem of traffic speeding through the village was highlighted as “a big issue” with parking on pavements mentioned as a major hazard to wheelchair users as well as to parents with push chairs.

The village also has very limited public transport links.

Bus Services: Whitelaws is mainly an hourly service Mon-Sat service. Stuarts, Glespin – Lanark Mon-Sat evenings 2 hourly service and 3 hourly on a Sunday.

There is a local L&B taxi service.

## Community Action Plan: Considerations

The availability of good quality housing is something that has been raised by local residents as a way forward in the regeneration of the area. Statistics show that there is a shortage of private housing in the area. Encouraging developers into the area to develop more private housing could, in turn, encourage some of the workers who travel into the area for work, to move into the area. However, here are limitations on building opportunities due to mine workings.

Rigside has become home to families from outwith the area, housed through Local Authority lets. Some consideration is needed to find ways for improving community engagement and increasing the overall sense of community spirit due to the increase in newcomers to the area, many not being used to such a rural environment. Other considerations include better use of gardens for parking as a means of alleviating the parking issues.

From the survey, community activities for children and young people emerged as one of the highest priorities for local residents. Linked with the strong desire for annual events such as a Christmas celebration and a summer Gala Day, it would be worthwhile to consider the creation of an events committee or similar group to tackle the challenge of creating opportunities and raising the necessary funding to increase the social and community engagement locally. This would help to strengthen the social fabric that binds the community together.

# Rigside & Douglas Water

## A shared vision for our community

- A community which builds on its community spirit and works in partnership, creating a healthy environment in which to live.
- Offering good walks, in a fantastic landscape, a place with accessible paths and tracks, encouraging people to enjoy being outdoors and getting more active.
- An attractive community, with housing which will attract more people to the area, and excellent facilities that support the people who live here, encouraging our young people to stay.
- A friendly place, where, by working well together, annual events are well supported and enjoyed by all age groups.
- A community that works together to help give activities and learning opportunities to our children, our youth and our elderly.
- A community that is thriving, with excellent nursery and primary education and where everyone feels valued.
- A safe community, where people feel happy and at ease.
- We continue to build on our strong volunteer base that cares for and respects its community members.
- A community that cherishes its environment and takes pride in its locality.

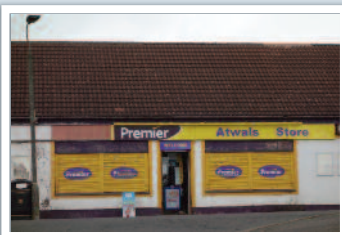


## The results from the community survey show us what the people of **Rigside & Douglas Water Likes**



**63%**  
Community Spirit

*“small tight community where most people know each other”*



**29%**  
Amenities

*“good school and nursery”*

*“we all want to make our village a great place to bring up a family in the countryside”*



**23.5%**  
Safe Community

*“I like the quietness and that we have a shop”*



**23.5%**  
Rural

*“good views and walks”*

*“countryside with good access to motorway, local towns and railway stations”*



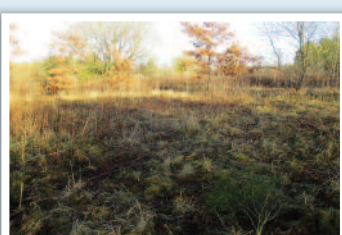
**10.5%**  
Well Located

*“wildlife and countryside”*

*“it’s a very quiet place to live and in general there are few issues, the countryside is beautiful and there’s plenty of nice walks to enjoy”*



**8%**  
Public Transport



**2.5%**  
Nice Walks

*“I like that I can see my grandchildren every day in a safe community”*



## The results from the community survey show us what the people of **Rigside & Douglas Water Dislikes**



**43%**  
Environment

*“transport links and unused houses”*

*“all the empty houses”*

*“houses being brought down”*



**41%**  
Lack of Activities

*“gardens not being kept up to standard”*

*“not a lot for kids to do”*



**31.5%**  
Lack of Civic Pride

*“speeding cars”*

*“ignorance of some dog owners – dog fouling on roads and pavements”*



**27.5%**  
Public Services

*“it looks a bit barren in places, it also lacks shops etc”*



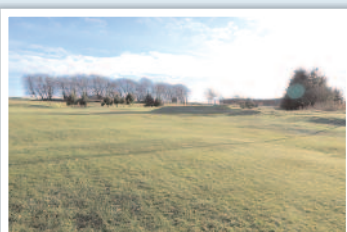
**19.5%**  
Community Safety

*“the main road is just in front of of our house and the lorries can go at some speed, it can be frightening”*



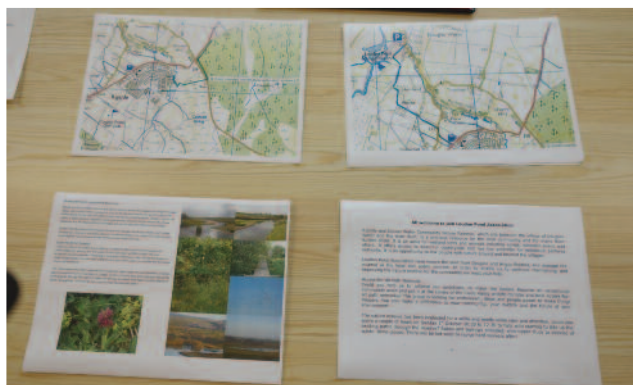
**17.5%**  
Housing Issues

*“there is a lack of amenities, jobs and things for young people to do which results in young people leaving and not returning or being parked on unemployment benefits”*



**10%**  
Lack of Amenities

## THEME 1: Amenities



These are the main strategies and priorities the community will work towards achieving in partnership with public agencies and other supporters.

Access to good quality green space and woodland is important in any community as a way of improving health and wellbeing. Other amenities such as good quality local shop provision that allows people to access fresh, affordable food and other supplies are also important. In addition, access to sport and play facilities as well as excellent school and nursery provision are key elements in supporting a healthy, well educated and sustainable community.

### More shops

- Work with South Lanarkshire Council and local traders to see how they can work together to improve the shopping experience for local people.

### Gym for all ages indoor & outdoor

- Work with appropriate organisations to carry out a community mapping exercise looking at green space and how it can be designed to suit the needs of everyone.
- Source funding for this.

### Improve the path network

- Work with South Lanarkshire Council and Paths for All to identify what needs to be done to improve the path network.
- Agree a timeline for work required.

### improve the parks, ponds and woodland

- Carry out a feasibility study on what needs done, who would be involved and what the associated costs would be.
- Source funding for this.

### Community noticeboard

- Work with South Lanarkshire Council to identify and agree best locations for noticeboards.
- Source funding for this.

### One stop shop

- Work with South Lanarkshire Council to explore this idea.

### Potential Partners

**Greenspace Scotland, SportScotland, Residents and Tenants Association of Rigside and Douglas Water, local retailers & businesses, local community, Paths for All, South Lanarkshire Council.**



## THEME 2: Community Activities and Facilities



**These are the main strategies and priorities the community will work towards achieving in partnership with public agencies and other supporters.**

Building social capital is a key aspect of creating strong, resilient communities. Good quality community facilities that are fit for purpose with regular opportunities for communities to meet and share in activities and conversation, this is the glue that binds communities together. It is essential that the community can work with other stakeholders, support agencies and other organisations to realise these priorities identified by the community.

### **More activities for children and young people**

- Carry out community engagement to identify what type of activities would be supported by children and young people
- Work with South Lanarkshire Council Community Learning Team to take plans forward

### **Annual activities**

- Create an events group to carry out community engagement to identify what type of activities would be supported by the community.
- Create a calendar of annual events
- Carry out fund raising activities and apply to funders for the resources to deliver annual events
- Visit other communities and learn from their successes

### **More activities for the elderly**

- Carry out community engagement to identify what type of activities would be supported by older people.
- Carry out fund raising activities and apply to funders for the resources to deliver annual events
- Work with partners to deliver these.

### **Better use of existing Community Hall**

- Promote what is already happening in the hall to the wider community
- Carry out community engagement to identify what type of activities would be supported by the community
- Work with South Lanarkshire Council to make sure the facility is affordable and accessible

### **Employability Initiatives**

- Work with South Lanarkshire Council and other organisations to deliver appropriate skills and training opportunities for local people.
- Identify funding where required.

### **Potential Partners**

**Residents and Tenants Association of Rigside and Douglas Water, South Lanarkshire Council, Local Community, Rigside Primary School**

## THEME 3: Roads & Transport



These are the main strategies and priorities the community will work towards achieving in partnership with public agencies and other supporters

We need to work closely with South Lanarkshire Council and other Community Planning Partners to help alleviate the issues relating to parking, poor road conditions and traffic safety issues around speeding. There is also a big issue around connectivity with many people living without access to a car and a public transport service that is limited and expensive.

### Create a safe crossing across the A70

- Work with South Lanarkshire Council and other appropriate agencies to look at addressing this key issue

### Road Maintenance (fill pot holes and grit bins)

- Carry out a mapping exercise to identify work needing done and work with South Lanarkshire Council to prioritise their road maintenance schedule.

### Speed calming measures

- Work with South Lanarkshire Council to explore options for making the roads safer.

### Improve bus times

- Contact local transport companies and engage them around how best to address this issue

### More affordable public transport

- Contact local transport companies and engage them around how best to address this issue

### A community bus

- Carry out a feasibility study and business plan to investigate this initiative.
- Raise funding for feasibility study and business plan

### Upgrade the Roads

- Work with South Lanarkshire Council and other appropriate agencies to look at addressing this issue

### Potential Partners

South Lanarkshire Council, Residents and Tenants Association of Rigside and Douglas Water, Transport Scotland, Local Haulage Company, Bus Users Scotland



## THEME 4: Village Environment



**These are the main strategies and priorities the community will work towards achieving in partnership with public agencies and other supporters**

Access to woodland, water and good quality green space with good path networks is important for the health and well being of a community. It also relies on such key priorities as feeling safe, having adequate play and growing spaces, with people having a sense of place and sense of pride. A community that is attractive and cared for, with local people taking responsibility for their actions on a day to day basis, this is essential in helping maintain a clean and tidy environment for everyone to enjoy.

### **Clean up our village – litter and fly tipping**

- Encourage participation in a 'Clean Up Rigside & Douglas Water Campaign!'
- Work with South Lanarkshire Council to ensure a rapid response to dealing with fly tipping.

### **Deal with the dog fouling**

- Carry out a mapping exercise to identify areas where bins are required.
- Work with South Lanarkshire Council to ensure bins are emptied regularly.
- Work with South Lanarkshire Council on a joint approach to dealing with dog fouling.

### **Improve the housing situation**

- Work with South Lanarkshire Council to look at how best to encourage private housing development
- Look at creative ways of encouraging new residents to engage more within the local community.
- Encourage civic pride of residents through community engagement activities

### **A safer community**

- Continue to work with Police Scotland to look at increasing community policing.
- Encourage the community to report any incidents to the police or relevant authority to enhance response rate.

### **Community garden/allotments**

- Work with South Lanarkshire Council to agree a plan of action on this by carrying out a mapping exercise and feasibility study.

### **Floral Enhancements/Encourage Biodiversity**

- Seek funding for improving the resources available for this.
- Encourage local businesses, groups and residents to get involved.
- Continue to improve and develop the Rigside and Douglas Water Community Nature Reserve.

### **Potential Partners**

**Residents and Tenants Association of Rigside and Douglas Water, South Lanarkshire Council, Police Scotland, local businesses, local community groups, residents, Loudon Pond and Ponfeigh Glen Association.**

## Early actions funded through the Participatory Budget

Douglas Water Golf Club	Youth Engagement
Loudon Pond & Ponfeigh Glen Association	Rigside and Douglas Water Community Orchard and Wildflower Planting
Residents and Tenants Association of Rigside and Douglas Water	Rigside Visual and Floral Improvements Village History Project
Douglas Water and Rigside Old Age Pensioners Association	Entertainments for the Elderly
Rigside Playparks Group	Grand Opening of new skatepark.
Rigside & Douglas Water Church Guild	P A system equipment
Rigside Bowling Club	Indoor short mat bowling equipment

## Making the links to the South Lanarkshire Community Plan

The South Lanarkshire Community Plan sets out six high level outcomes with each Community Planning Partner agreeing to work together to achieve these. We see our community action plan as an opportunity to link in with and help make action to achieve major improvements in the quality of life for the people of Rigside and Douglas Water.

South Lanarkshire Community Plan High Level Outcomes	Rigside & Douglas Water Community Action Plan Themes & Priorities
<p>Improving health inequalities.</p> <p>Reduce crime and improve community safety.</p> <p>Promoting sustainable and inclusive communities and promoting opportunities throughout life.</p> <p>Sustainable economic recovery and development.</p> <p>Tackling Poverty.</p>	<p>Amenities.</p> <p>Roads and Transport.</p> <p>Community Activities &amp; Facilities.</p> <p>Village Environment.</p>





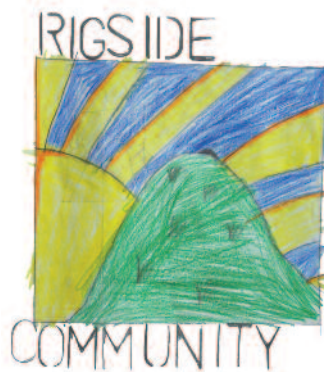
# What the kids have to say!

As part of the community action research, steering committee members involved pupils from Rigside Primary school by offering them the opportunity to have their say in living in Rigside and Douglas Water as well as illustrate their community by drawing a picture or designing a logo.

30 pupils took part in the survey ranging from P1 to P7. From their responses we can see that almost half (43%) are a member of a club and when it comes to what pupils like to do in their spare time there is a 50% split between preferring outdoor to indoor activities. In response to what pupils like most about living in their community 60% like what their local environment offers, 30% enjoy their social networks and 10% enjoy other things like the peace and quiet, watching TV and playing with toys. In response to the question of what pupils dislike there were a variety of responses including, litter, houses being demolished, lack of things to do. The two largest responses were bullying (13%) and vandalism (10%).



DJ P7



Mia-Lillybell P5



Indiana P5/6/7



Thomas P7



Robert P7



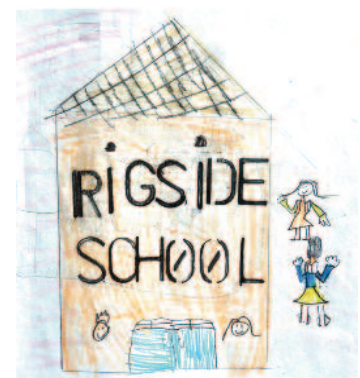
Erin P5/6/7



Stuart P6



Hannah P6



Fallon P5/6/7



# Making it Happen

This Community Action Plan sets out the priorities for the development of Rigside & Douglas Water over the next 5 years as identified by the community through an extensive process of community engagement carried out from July to September 2017.

## The Plan contains

- A summary of the Rigside & Douglas Water Community Profile
- Our main Likes and Dislikes expressed in the community survey
- Our Vision Statement for Rigside & Douglas Water
- The main themes and priorities for taking action
- The Participatory Budget projects that are helping kick start the action plan.
- Making the links between the Community Action Plan outcomes and the South Lanarkshire outcomes of the Community Planning Partnership.

## Information on how to get involved or just be kept informed.

The Coalfields Community Action Plan is not just for the few but for everyone, we hope you will read it, consider its content and help toward making it work by taking action where you are, in whatever way you can. If everyone did something positive for their community every day, then what a difference that would make!

Many thanks go to all those who took their time to share their views, to the volunteers and participants who made the Family Fun Day event a great success. Thanks go to members of the community who contributed the images in this Action Plan.

The Participatory Budget from Coalfields Regeneration Trust is £25,000. This is funding which has been used to help take forward local projects which support the key themes found in this community action plan.

To find out more information about the Rigside & Douglas Water Community Action Plan or to volunteer with any projects please contact:

**Email: [rigside.residents@gmail.com](mailto:rigside.residents@gmail.com)**

Design and Print : Armstrong Printing (Alloa) Ltd.



the coalfields  
regeneration trust



The Coalfields Regeneration Trust is a Charity registered in England and Wales (No. 1074930), a Charity registered in Scotland (No. SCO39277) and a Company Limited by Guarantee registered in England and Wales (No. 3738566). The Registered Address is 1 Waterside Park, Valley Way, Wombwell, Barnsley, South Yorkshire, S73 0BB.